

NATURALLY WONDERFUL

Embracing the tones and textures of the surrounding landscape, this beachside home is anything but predictable.

STORY *Elizabeth Wilson* | STYLING *Nerida Thorburn* | PHOTOGRAPHY *Simon Whitbread*



KITCHEN/DINING Interior designer Nerida Thorburn at the dining banquette. Dining chairs, Fenton & Fenton. Custom dining table by Hendrix the Maker. Ay Illuminate 'ZI' pendant light, SmithMade. Joinery by Loughlin Furniture. Timber cabinetry in American oak veneer; remaining joinery painted Dulux Haast Half. Cabinetry hardware, MadeMeasure. Splashback tiles, Skheme. Porcelain benchtops in Ars Beige, Earp Bros. Filtered-water tap, Billi. Mixer tap and sink, Abey. Stove, Ilve. Nafani stools, Inartisan. Luca crazy paving, Eco Outdoor.

THIS IS THE LIFE

Peta and Glenn love how their home combines the comfort of a luxe resort with barefoot casualness. “We want it to be a place where our children can bring their friends, and where people feel free to put their feet up on the coffee tables,” says Peta. The deck stretches the width of the house, stepping down to lawn, leading through bush to the sand. There are no fences, so the property feels truly open to the elements. Perfect for this family of beachgoers.

The NSW South Coast is outlined by continuous crescents of golden sand. Culburra Beach, two and a half hours’ drive south of Sydney, is a particularly special arc on the map. The quiet township is located on its own peninsula, bordered by two surf beaches, a river and a lake. With nature on its doorstep, a relaxed village community and a lack of fast-food outlets or traffic lights, it’s a little patch of laidback paradise. And it’s where Sydneysiders Peta and Glenn escape to whenever they can, along with their children Callum, 20, and Nina, 14.

The couple first visited Culburra several years ago when they stayed with friends who owned a holiday ►

LIVING The fire surround is a mix of Mitta Mitta and Alpine stone cladding from Eco Outdoor. Custom sofa, Fanuli. Dania occasional chairs, Satara. Coffee tables, MCM House. Drop light, Inartisan. Escea fireplace, Abbey Fireplaces. Blinds, Blinds by Peter Meyer, installed by Marlow & Finch. Doors and windows, Stegbar. Rug, Dash & Albert. Walls and ceiling painted Dulux Lexicon Quarter.



MAIN BEDROOM House of Hackney 'Palmeral' wallpaper, Radford. Aren canopy bed, Inartisan. Wall lights, Lighting Collective. Felix bedside tables, MRD Home. **HALL** Casamance 'Shinok' wallpaper. Joinery painted Dulux Lexicon Quarter. Leather cabinet handles, MadeMeasure. **MAIN ENSUITE** *Above right and opposite* Overgrouted limestone wall tiles, Barefoot Living. Klaylife 'SpongeOh' pendant light. Custom vanity unit and mirror, Loughlin Furniture. Pietra Bianca bath and Gareth Ashton 'Lucia' tapware, all Cass Brothers. Jericho limestone floor tiles, Eco Outdoor. V-groove joinery painted Dulux Lexicon Quarter.

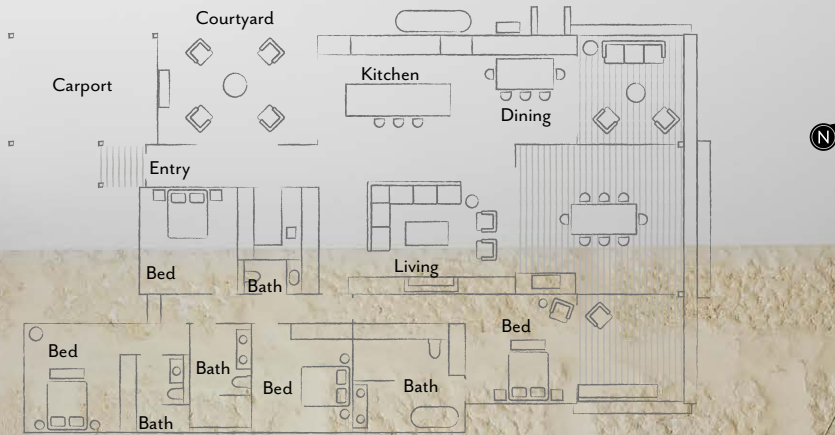
home there. They fell in love with the coastal town, returning as often as possible. Four years ago, they bought their own place: a 1000-square-metre block backing onto protected coastal bush. Set behind sand dunes, the property is a frisbee-throw from the beach, with a path out the back leading directly onto the sand.

Peta and Glenn thought about renovating the existing fibro cottage, but soon realised it would be more cost-effective to demolish it and rebuild. The couple enlisted a local design and construction firm, Designer Digs, and began shaping their beach home. They also engaged Sydney interior design company, Your Beautiful Home, to help finesse the layout and devise the look, feel and finishes for the interiors. "I wanted something timeless and homely but with a bit of a luxe-resort feel," says Peta. "Most importantly, it needed to be family- and pet-friendly."

The new house is a modern take on the classic weatherboard coastal cottage. Single storey with a multi-pitched roof, it's clad in James Hardie Linea boards painted Dulux Milton Moon, a soft, misty-ocean grey. The design incorporates four bedrooms, three bathrooms plus a powder room, a breezeway at the front entrance, an internal courtyard (providing outdoor space that is sheltered from off-shore winds) and lots of sliding windows and doors to help blur the lines between inside and out. All of which translates into a light-filled home that is open to the landscape. ►

THE LAYOUT

HOUSES **H&G**





THE PALETTE

- Dulux Haast Half (kitchen joinery)
- Dulux Milton Moon (exterior cladding)
- Dulux Five Fingers Peninsula (front door)



NINA'S ROOM *This image* Lizzo 'Cesto' wallpaper, Westbury Textiles. Klaylife 'Calo' pendant lights. Aloha bed, Naturally Cane. **FAMILY BATHROOM** Custom vanity by Loughlin Furniture. Jericho limestone cobbles and pavers, all Eco Outdoor. Tapware, Abey. Toilet, Parisi. **GUESTROOM** *Opposite* La Palma wallpaper, Mokum. Monterey wall light, Fat Shack Vintage. Bedhead, Fenton & Fenton. Hadi stool, Inartisan. Amendo engineered-oak flooring, Havwoods International. ▶

"IT'S SOPHISTICATED BUT DOESN'T TAKE ITSELF TOO SERIOUSLY." NERIDA THORBURN, INTERIOR DESIGNER

Paint colours are reproduced as accurately as printing processes allow.





REAR DECK Top Harper chair, Serengeti sofa and Trunk table, all Uniqwa Collections. Vergola louvred pergola. **FRONT ENTRANCE** Artwork by Fiona Chandler. Casamance 'Carioca' wallpaper in Vanille, Zepel Fabrics. **COURTYARD** Sonoma Slat occasional chairs, Globe West. Lava stone stool, Uniqwa Collections. Custom firewood-storage unit by Horizon Landscapes. Roger Pradier Belcour No.9 wall light, Special Lights. Colorbond roofing in Surfemist. Luca crazy paving, Eco Outdoor. **OUTDOOR DINING** Opposite Barbecue, BeefEater Barbecues. Custom dining table by Hendrix the Maker. Mitta Mitta and Alpine cladding and Barwon dining chairs, all Eco Outdoor. *For Where to Buy, see page 192.*

While the external views are unquestionably stunning, the interiors are equally atmospheric thanks to Nerida Thorburn, head interior designer at Your Beautiful Home. "Peta was looking for a warm and relaxing retreat but nothing too predictable or too perfect, so I didn't want to create a typical beach house," says Nerida. "For me, the rugged rawness of the bush surroundings was just as important as the beach. That's why it was important to include the timber and stone too."

When Nerida suggested crazy paving for the flooring in the open-plan kitchen/dining space, Peta hesitated: "The idea of the stonework challenged me at first, but now it's the thing I love the most!" she says. Nerida selected Luca crazy paving from Eco Outdoor for this important role, chosen for its grey and sandy tones. "It gives the space a relaxed, playful vibe," says Nerida. "You might not use it in the city, but it's perfect for a holiday house and it feels lovely underfoot."

Stonework reappears in the adjacent living room, where Nerida specified stone for the fireplace surround. The cladding extends outdoors to the barbecue area, drawing the eye outside and blurring the lines between indoors and out. But the most astonishing stone treatment is in the main ensuite where the walls feature overgrouted limestone tiles (sourced from Barefoot Living), creating the effect of aged sandstone.

Pops of deep-sea blue are scattered throughout the house - it is a coastal home, after all, and it is Peta's favourite colour - but where there is colour, it's quite subtle or a little surprising, says Nerida. Since Peta didn't want the house to feel too new or perfect, Nerida minimised the number of plain white walls, opting instead for feature wallpapers ranging from an understated, textural style in the living room to a flamboyant jungle-print design for a bit of playfulness in a guestroom. "The home has such a wonderful feel because it is so layered and tactile," says Nerida. "It's sophisticated, but it doesn't take itself too seriously." To ensure nothing feels too precious, she has used indoor/outdoor upholstery fabrics and rugs throughout the living spaces.

For Peta and Glenn, the home is kick-off-your-shoes perfection. "It feels like being wrapped in a favourite blanket," says Peta. "When I'm here, any stress I might have just melts away - the whole house has an ease about it. And I love that when friends walk in they feel the same. It feels a bit magical."

H&G

Your Beautiful Home, Balgowlah, NSW; 0416 220 226 or yourbeautifulhome.com.au. Designer Digs, Nowra, NSW; info@designerdigs.com.au.

